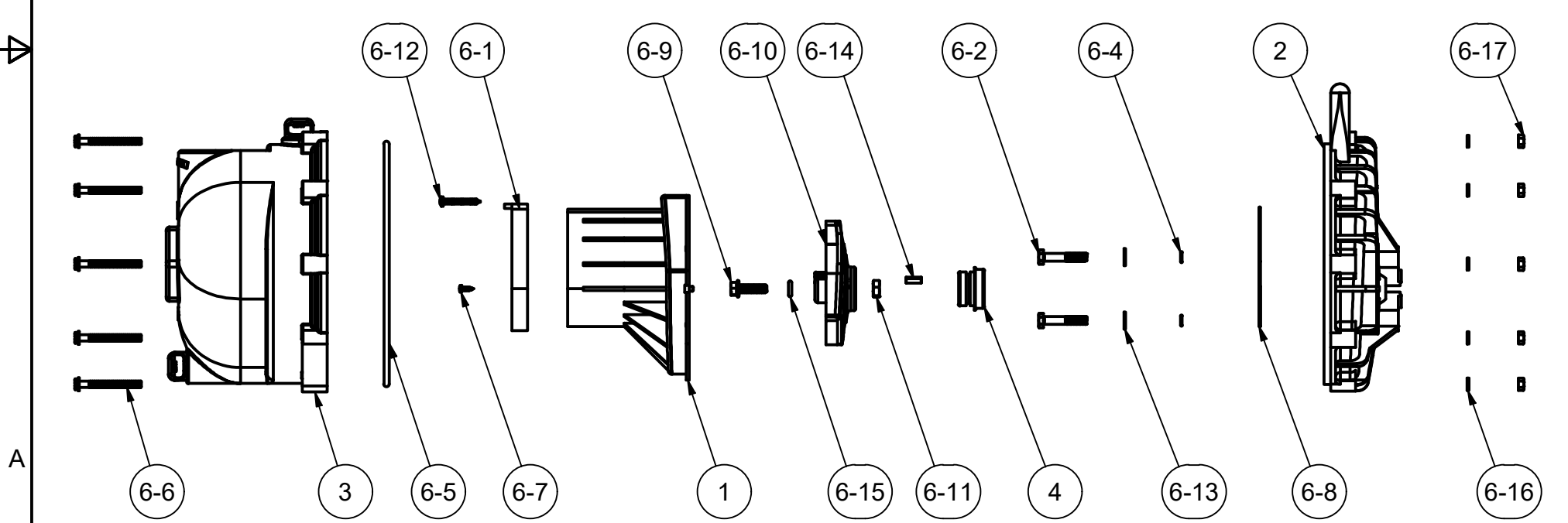


Parts List			
ITEM	QTY	PART NUMBER	DESCRIPTION
1	1	12702A	2" POLY PUMP VOLUTE
2	1	12703A	POLY PUMP REAR BRACKET
3	1	12712AVP	2" POLY PUMP BODY- FKM
4	1	12733V	MECH SEAL ASSY - FKM
5	1	12910	DECAL (N/S)
6	1	PUMPKIT002P	KIT FOR 200PO-V
6-1	1	12705V	PUMP CHECKVALVE, FKM
6-2	4	12715A	5/16-24 X 1 3/4" HHCS WITH TORQ-PATCH
6-3	1	12716	PUMP SLINGER
6-4	4	12717V	AS568A -011 O-RING, FKM, BROWN
6-5	1	12719AV	AS568A -375 O-RING, FKM, BROWN
6-6	10	12720	1/4-20 X 2 1/2" SL IND HWHS
6-7	2	12725	#6 X 1/2" PPH SMS
6-8	1	12754V	O'RING SEGMENT
6-9	1	12765A	5/16-24 X 1 1/8" HFS
6-10	1	12771A	IMPELLER
6-11	1	12775A	7/16-14 HEX NUT
6-12	1	12900	#10 X 1 1/2" PPH SMS
6-13	4	12901	5/16" FLAT WASHER
6-14	1	12902A	3/16" SQ. X 5/8" KEY
6-15	1	A204V	#204 O'RING, FKM
6-16	10	V07018	1/4" LOCKWASHER
6-17	10	V07019	1/4-20 HEX NUT



BANJO
CORPORATION

BANJO CORPORATION
150 BANJO DRIVE, CRAWFORDSVILLE, IN 47933
WEB SITE: WWW.BANJOCORP.COM
E-MAIL: BANJOSALES@IDEXCORP.COM

DESCRIPTION	2" POLY WET SEAL PUMP W/ BEARING PED, FKM
PART NUMBER	200PO-V

THIS DRAWING AND ALL INFORMATION CONTAINED THEREON ARE THE EXCLUSIVE PROPERTY OF BANJO CORPORATION.

UNLESS SPECIFICALLY NOTED, THIS DRAWING AND ITEMS SHOWN ON THIS DRAWING ARE SUBJECT TO CHANGE AT ANY TIME.